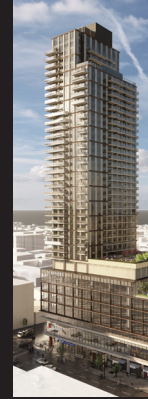


AT SOUTH GRANVILLE STATION

THE STORIES

FEATURE SHEET



A NEW CHAPTER BEGINS

- By trusted Vancouver developer, PCI Developments, *The Stories* is a purpose-built rental project in Vancouver's prominent South Granville neighbourhood at the main intersection of West Broadway and Granville Street.
- Designed by Musson Cattell Mackey Partnership (MCM Architects), one of BC's premier urban architects with over 50 years of experience and many notable projects throughout Metro Vancouver.
- Constructed by Ledcor Group, one of Vancouver's most trusted builders with over 75 years of experience and expertise.
- Thoughtfully designed by Bob's Your Uncle (BYU) Design, one of Vancouver's innovative interior design firms.

FOR ALL BLOCKS OF LIFE

- Since the early 20th century, South Granville has long been home to iconic theatres, art galleries, and boutique shopping, playing an important role in the community's storyline.
- *The Stories* adds 226 new homes and 29,400 SF of grocery and retail, bringing the neighbourhood to new heights.
- With a welcoming plaza and nearby parks, the area attracts new characters of all shapes and sizes.
- The South Granville Business Improvement Association (SGBIA) is dedicated to ensure that South Granville remains a thriving destination for shopping, dining, art, and entertainment.
- With the new South Granville SkyTrain Station and buses always moving, you can easily hop from one scene to the next. Stroll the Art Walk, take your dog for a run, or bike down to Granville Island. Close to Downtown, YVR, UBC, Kits Beach and much more— your ideal lifestyle writes itself.

MANAGEMENT THAT CARES

- Professionally managed by Warrington Residential
- On-site Residential Manager

EXCEPTIONAL AMENITIES

/ Level 40 Rooftop Amenity:

- Dining space with kitchen including fridge, oven, stove, sink, and dishwasher
- Dining and lounge space with seating, TV, fireplace and kitchen including fridge, oven, sink, and dishwasher
- North outdoor dining and lounge area with BBQ station and seating
- South outdoor lounge patio with seating
- Washroom

/ Level 10 Amenity:

- Co-working space with private co-working pods and collaborative area
- Dining space with kitchen including fridge, oven, stove, sink, and dishwasher
- Multipurpose TV / entertainment / games room (incl foosball table and pool table)
- Theatre / media room
- Outdoor dining and lounge areas with BBQ stations and seating
- Outdoor children's play area
- Outdoor community garden
- Outdoor dog play area
- Washroom

/ Level 9 Fitness Amenity:

- Shared indoor fitness gym equipped with professionally selected equipment
- Flex space for yoga and stretching
- Water refill station
- Washroom





/ **Additional Amenities:**

- Lobby and mailroom
- Parcel lockers
- Secure underground parking available, with EV charging stalls
- Car wash station on P3
- Dog wash station on L1
- Secure underground bike lockers and storage lockers available
- Bike repair station
- Secure touchless fob access throughout building
- Three high-speed elevators
- Bike elevator for easy access

INVITING INTERIORS

- Modern interiors curated by BYU Design feature rich finishes and thoughtful details that complement the vibrant urban neighbourhood
- Pet-friendly studio, 1 bedroom, 2 bedroom, and 3 bedroom units available
- Open concept living with interconnected kitchen, dining, and living spaces for seamless flow
- Large windows invite in abundant natural light and maximize views
- Warm vinyl flooring throughout (L10-35) and warm engineered hardwood flooring throughout penthouse homes (L36-39)
- Air conditioning throughout all homes for year-round comfort
- Light and dark colour schemes alternate every other level (L10-35) with upscaled colour schemes and finishes on penthouse levels (L36-39)
- Samsung front loaded washer and dryer (*all suites*)

CUTTING-EDGE KITCHENS

/ **Levels 10 - 35**

Premium appliances include:

- Whirlpool 24" (*studio only*) freestanding refrigerator
- Bosch 30" (1, 2 & 3 bedroom) freestanding refrigerator

- Bosch 24" dishwasher
- Frigidaire 24" (*studio & 1 bedroom*) over-the-range microwave
- Frigidaire 30" (2 & 3 bedroom) over-the-range microwave
- Frigidaire 24" electric range and oven (*studio & 1 bedrooms*)
- Bosch 30" electric range and oven (2 & 3 bedrooms)
- Rich and refined quartz countertops and backsplash
- Sleek and durable cabinetry, accented with dark and light finish upper cabinets
- Black faucet and stainless kitchen sinks

/ **Penthouse Levels 36 - 39**

Upscaled premium appliances include:

- Jennair 30" freestanding refrigerator
- Jennair 24" dishwasher
- Panasonic 20" microwave with trim kit
- Jennair 24" electric range and oven (1 bedroom) with Faber hood fan
- Jennair 30" electric range and oven (3 bedrooms) with Faber hood fan
- Rich and refined quartz countertops and backsplash
- Sleek and durable cabinetry, accented with wood upper cabinets
- Black faucet and stainless kitchen sinks

SOAK IN SOPHISTICATION

- Bathroom flooring porcelain tiles with matte finish
- Undermount sink with modern black faucet
- Rectangular vanity basin with quartz countertops
- White soaker tub, and walk-in showers in master ensuite (2 & 3 bedrooms only)
- Rain shower (*penthouse homes only*)
- Heated bathroom floors (*penthouse homes only*)